

CITY OF BURKE
ACTIVE
TRANSPORTATION
RECOMMENDATIONS

SDSU LANDSCAPE ARCHITECTURE

INTRODUCTION

Who we are:

- South Dakota State University
- Landscape Architecture
- City Planning



Why we are here:

- South Dakota Department of Health
- Introduce Active Transportation



ACTIVE TRANSPORTATION

- What is Active Transportation?

- Human-powered

- Why Active Transportation?

- Reduce motor vehicle dependence
- Pedestrian connections
- Face to face interactions
- Active living



PHASE 1 (0-2 YEARS)

- Circulation
- Vegetation and Amenities
- Ordinances

Phase	Circulation	Vegetation & Amenities	Ordinances	Signage	Outdoor Spaces	Housing & Zoning
1	X	X	X			
2	X	X		X	X	X
3	X	X			X	
4	X	X		X	X	X
5	X					

Map of Existing Outdoor Spaces



CIRCULATION

Current Circulation

- Many opportunities for outdoor recreation
- Segmented community
- Solution: Create network of sidewalks and trails



CIRCULATION

Sidewalks

- Link major areas in town
 - School, City Park, and Main Street
- Increase safety
- Increase community involvement



PHASE 1 SIDEWALKS

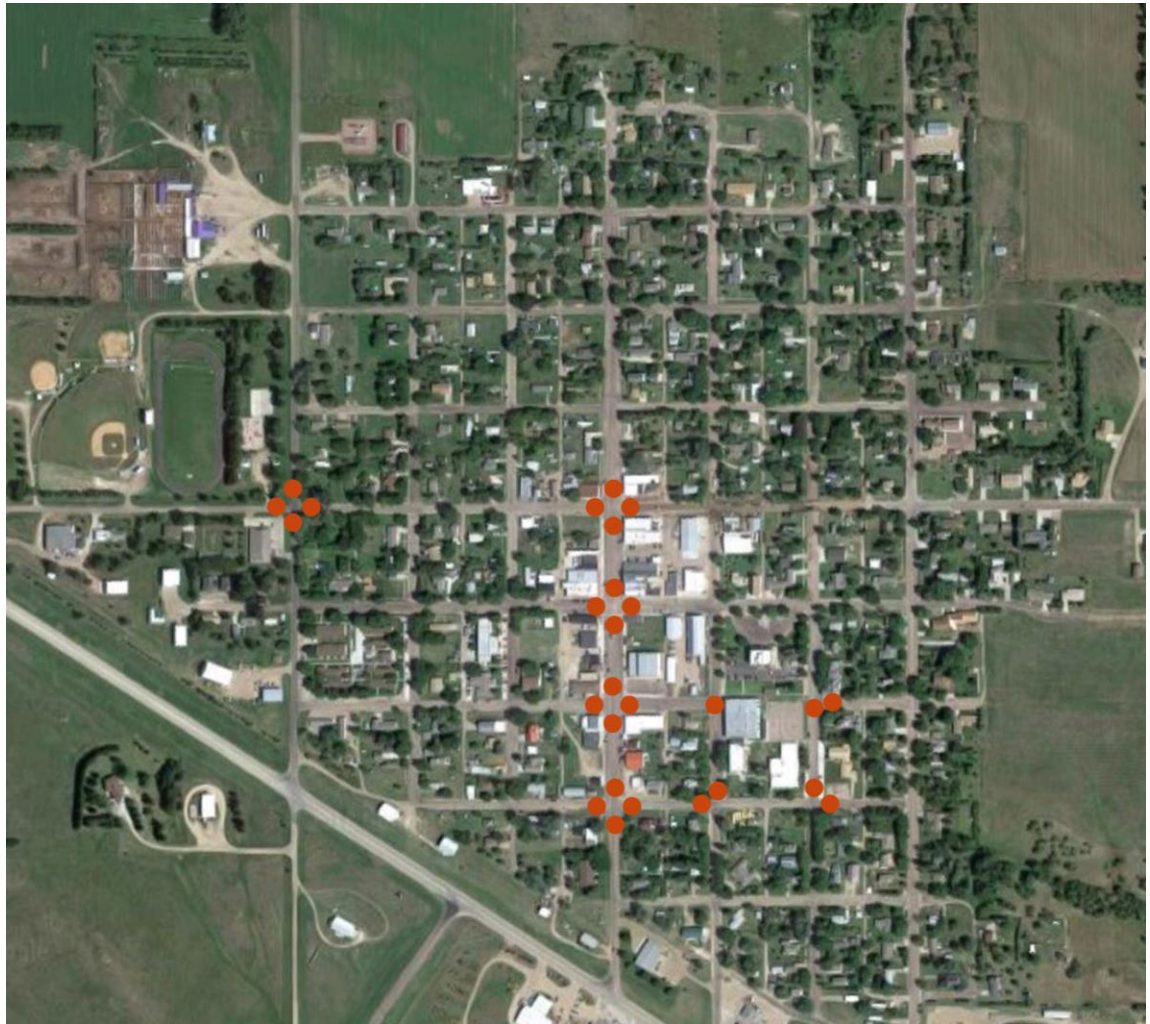
CIRCULATION

Crosswalks

- Increase safety
- Traditional white lines with a twist
 - Crosswalk art
 - Express community individuality
 - Does not sacrifice safety



Crosswalk Locations



VEGETATION AND AMENITIES

- Soften hardscapes
 - Streetscapes
 - Plazas
- Screen unpleasant views



TRASH CANS

- Trash cans greatly reduce amount of litter
- Properly placed cans will maximize litter prevention



PLANTER BOXES

- Soften the hardscape
- Easy to install
- Add interest
- Reduce storm water runoff



LIGHT POLES

- Promote safety for nighttime activity
- Add interest and definition
- Additions:
 - Banners
 - Planter Baskets



BIKE RACKS

- Active Transportation
- Secure place to park bikes



BIKE RACKS

- Aesthetics
- Advertisement



CITY ORDINANCES

- Sidewalks are homeowners responsibility
- Minimum Sidewalk Width
 - Uniformity
- Sidewalk Obstructions
 - Snow removal
 - Tree trimming
- Bicycle Riding
 - Road cycling only
 - Pedestrian safety



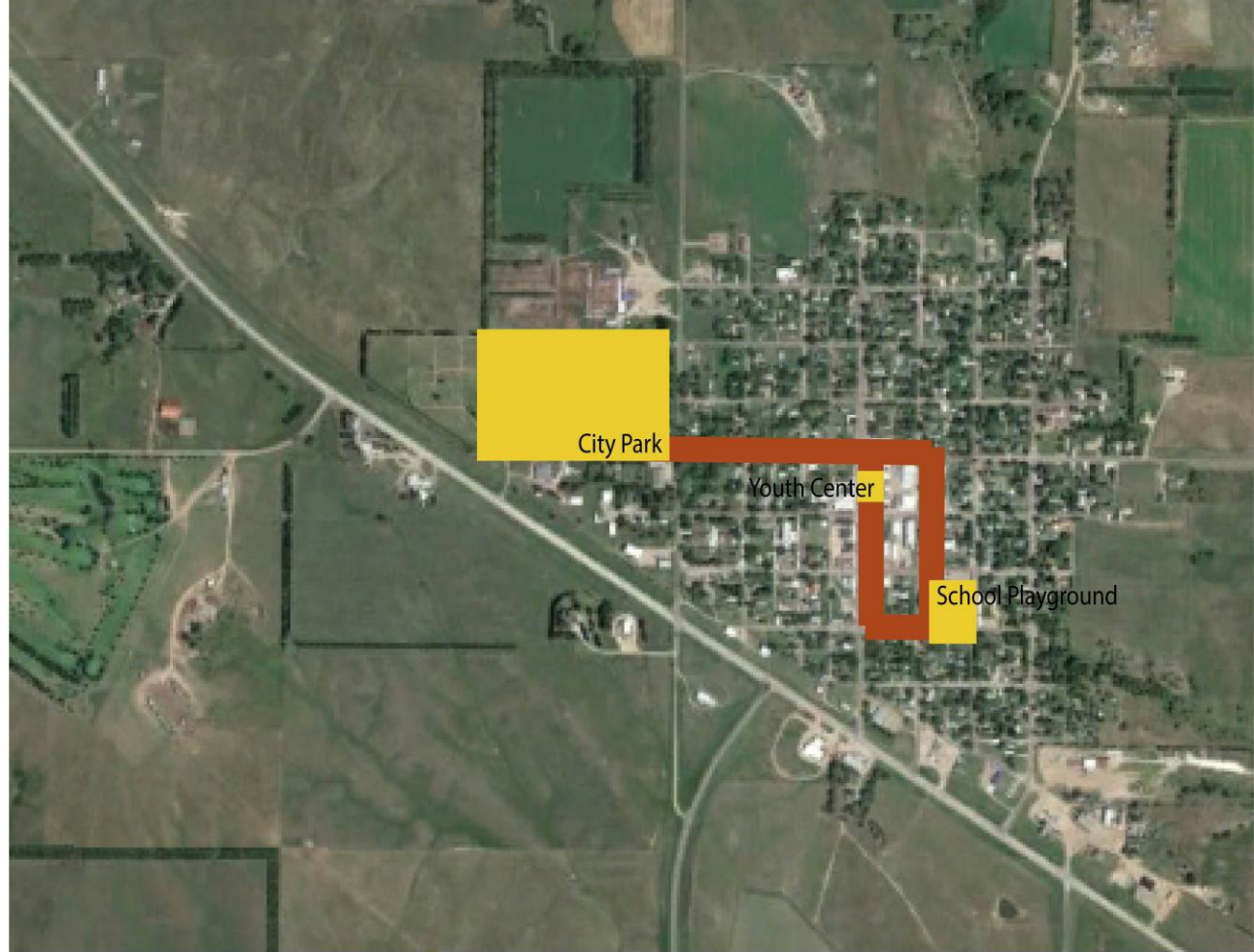
CITY ORDINANCES

- Enforcement
 - Appointed agent
 - From another community
 - Very passionate about sidewalks
- Community involvement
 - Group sessions
- Community Compliance
 - Incentives
 - Money from ticketing goes to subsidize sidewalk projects



YOUTH CENTER

- Connections
- Amenities
- Safer Routes
- Outdoor activity



PHASE 1 SIDEWALKS

PHASE 2 (3-5 YEARS)

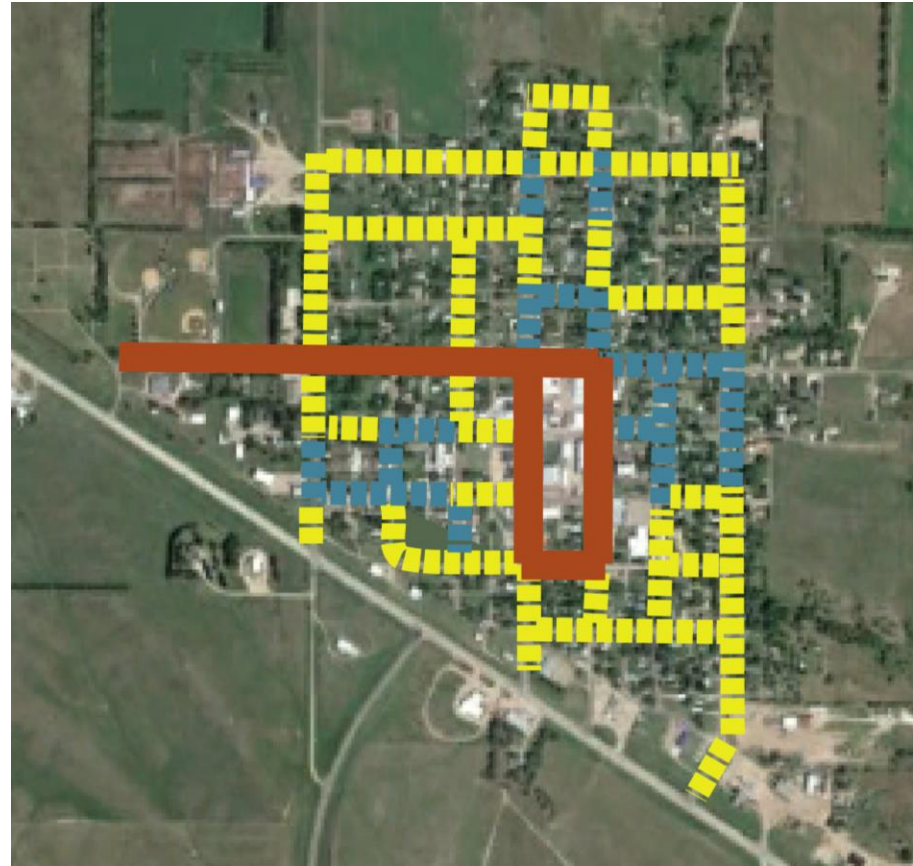
- Circulation
- Signage
- Amenities
- Outdoor Spaces
- Zoning

Phase	Circulation	Vegetation & Amenities	Ordinances	Signage	Outdoor Spaces	Housing & Zoning
1	X	X	X			
2	X	X		X	X	X
3	X	X			X	
4	X	X		X	X	X
5	X					

CIRCULATION

Sidewalks

- Centralize sidewalk connections
 - Minor to major
- Include existing sidewalks
 - Will increase circulation in heart of the city
 - Phase 3 connections

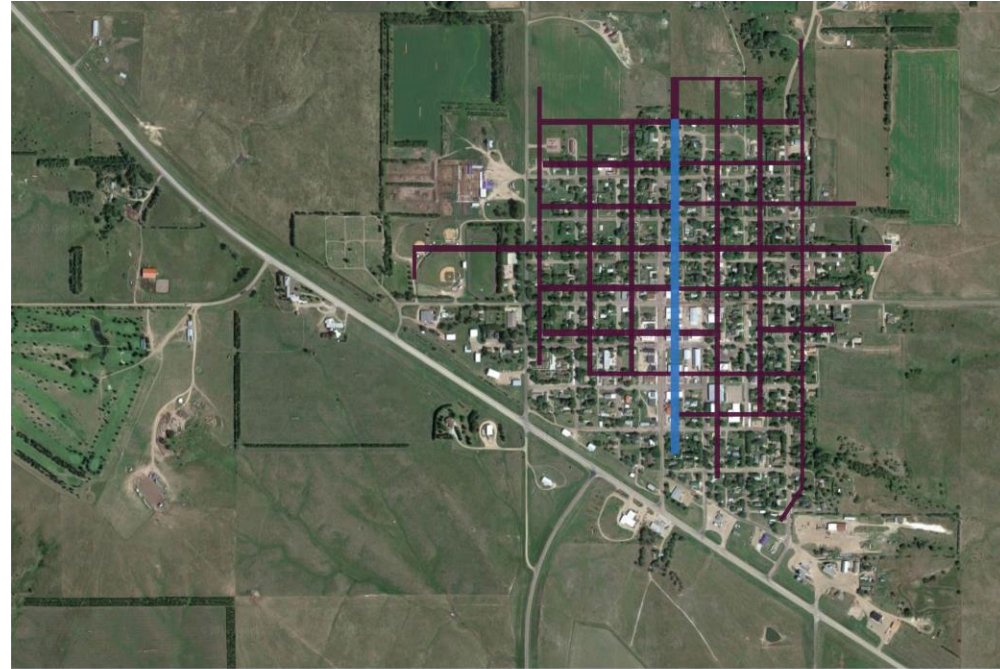


- PHASE 1 SIDEWALKS
- ▒▒▒▒▒▒ PHASE 2 EXISTING SIDEWALKS
- ▒▒▒▒▒▒ PHASE 2 NEW SIDEWALKS

CIRCULATION

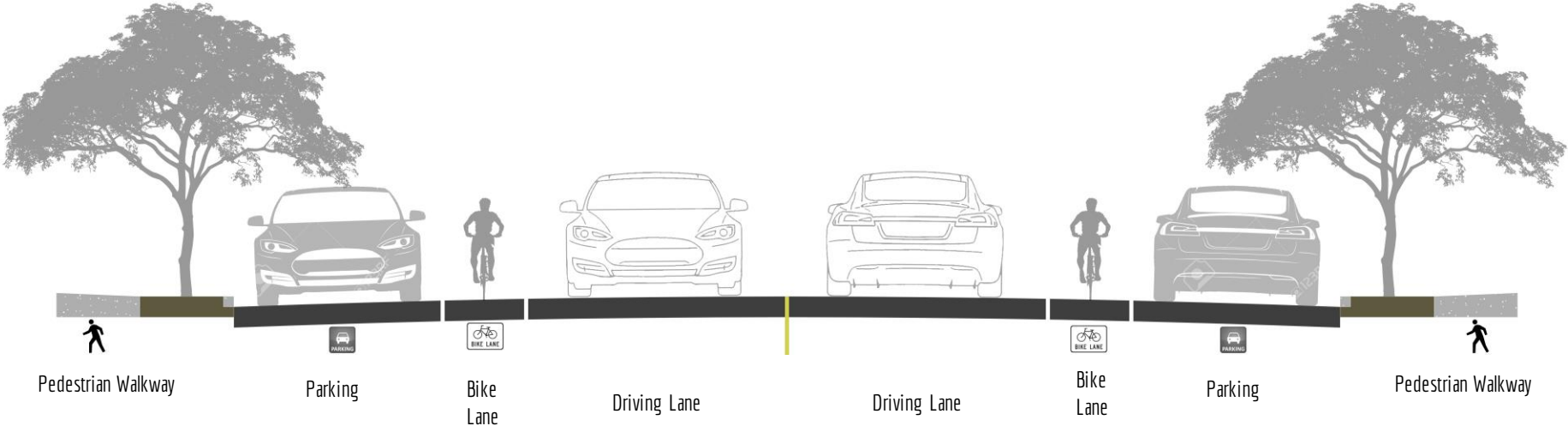
Bike Lanes

- City ordinance 12-2-8
 - “No person shall ride any bicycle on any sidewalk of this town.”
- On-street bike lane for Main St
- Mark the rest of the city as “Share the Road” streets
 - Motor vehicles and bicycles



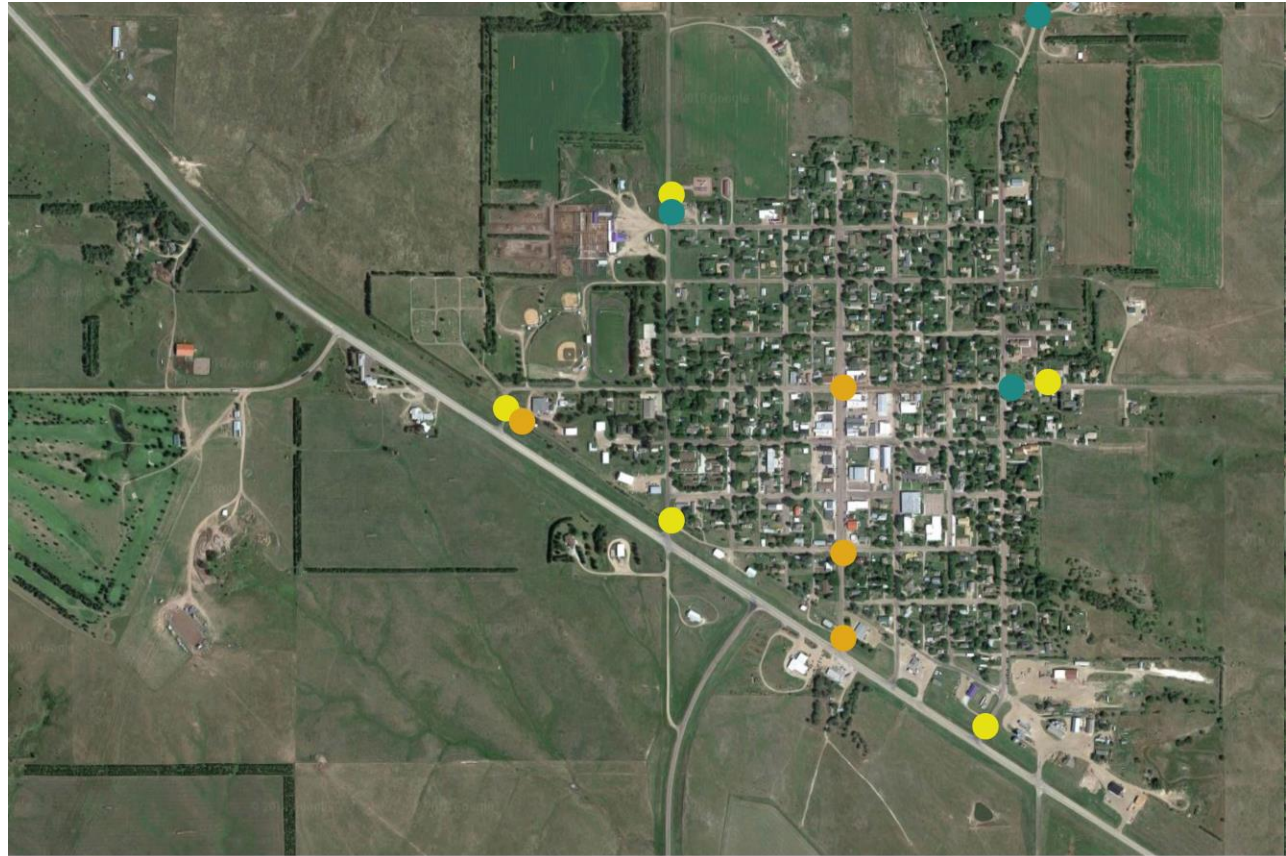
- On-Street Bike Lane
- Cyclist/Motorist Shared Lane

Main Street Bike Lane Section



SIGNAGE LOCATIONS

- Increase and move signage due to circulation changes



- Share the Road
- Truck Route
- Wayfinding

SIGNAGE

Bike Lane Markings

- Pavement markings are a great way to define edges



SIGNAGE

Share the Road

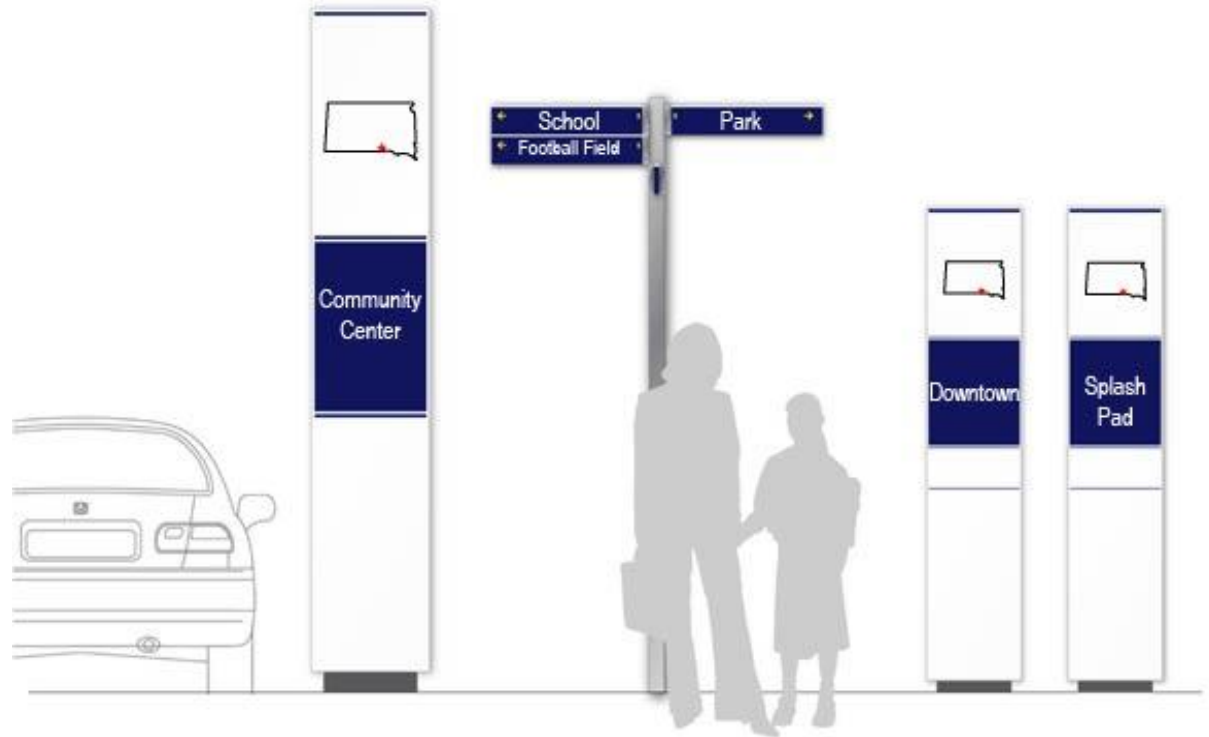
- Other than the bike lane implemented on Main street
- Gives bicyclists same rights to road as vehicular traffic



SIGNAGE

Wayfinding

- Help reduce confusion around Burke for visitors
- Locations marked on the map



AMENITIES

Shade Sails

- Provide filtered light
- Decrease temperature
- Decrease Reflectivity
- Add Color



OUTDOOR SPACES

- Utilize Vacant Lots
 - Sense of place
 - Environmental Quality



CORNER LOT

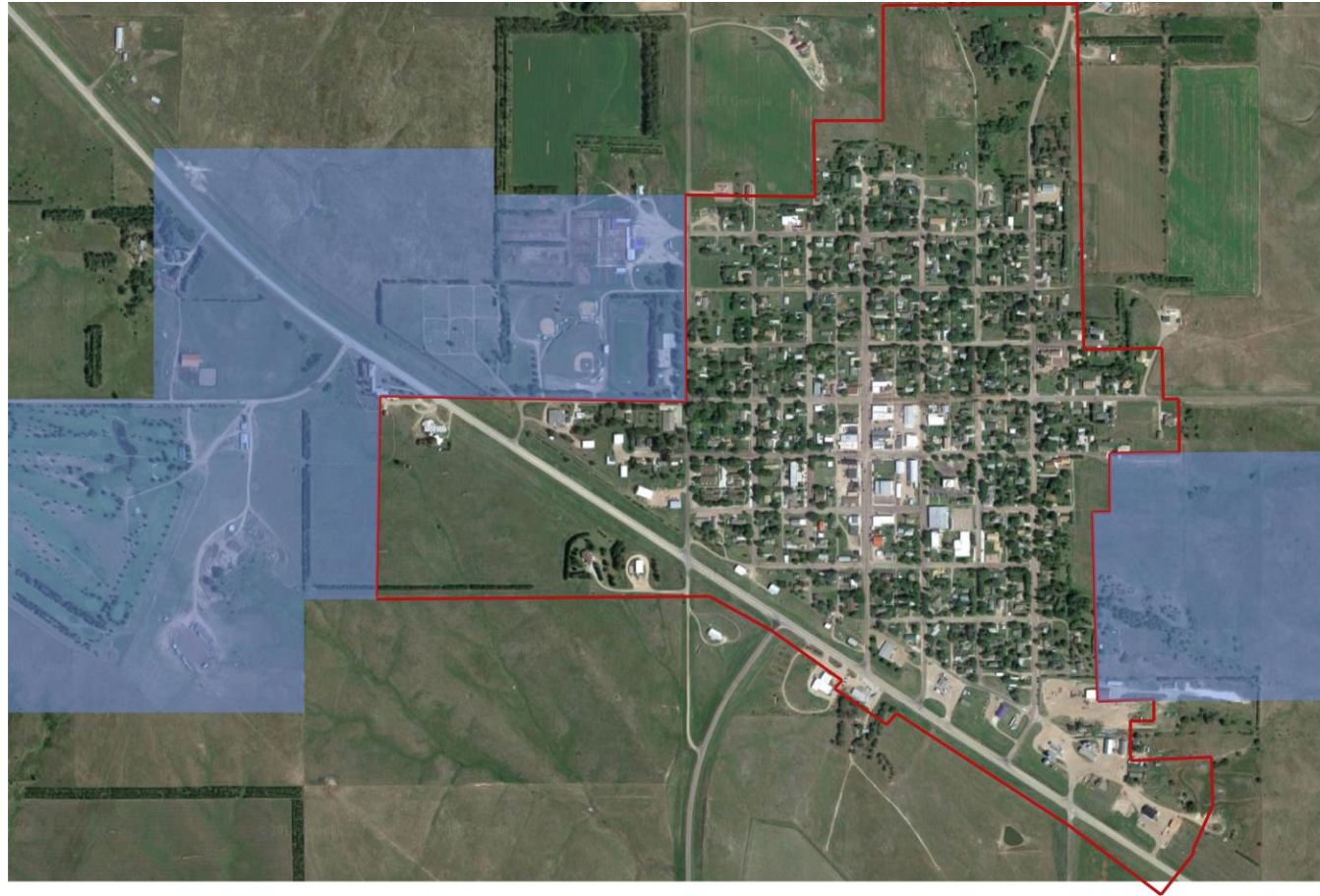


COMMUNITY CENTER



Land to Annex

- Petition to vote
- Housing demand
- Increase property tax revenue
- Upkeep amenities and maintenance



PHASE 3 (5-10) YEARS

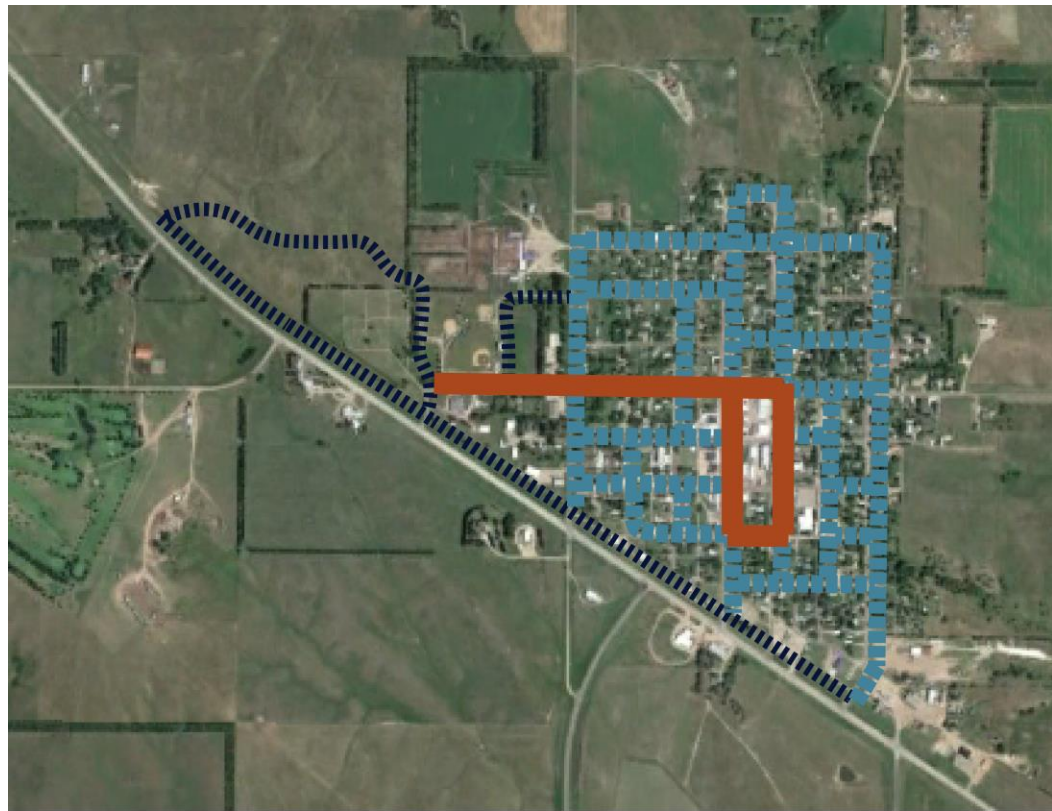
- Circulation
- Vegetation and Amenities
- Outdoor Spaces

Phase	Circulation	Vegetation & Amenities	Ordinances	Signage	Outdoor Spaces	Housing & Zoning
1	X	X	X			
2	X	X		X	X	X
3	X	X			X	
4	X	X		X	X	X
5	X					

CIRCULATION

Implement trail around the park

- Purpose:
 - Increase outdoor recreation
 - Encourage physical activity
 - Create safe area for activities

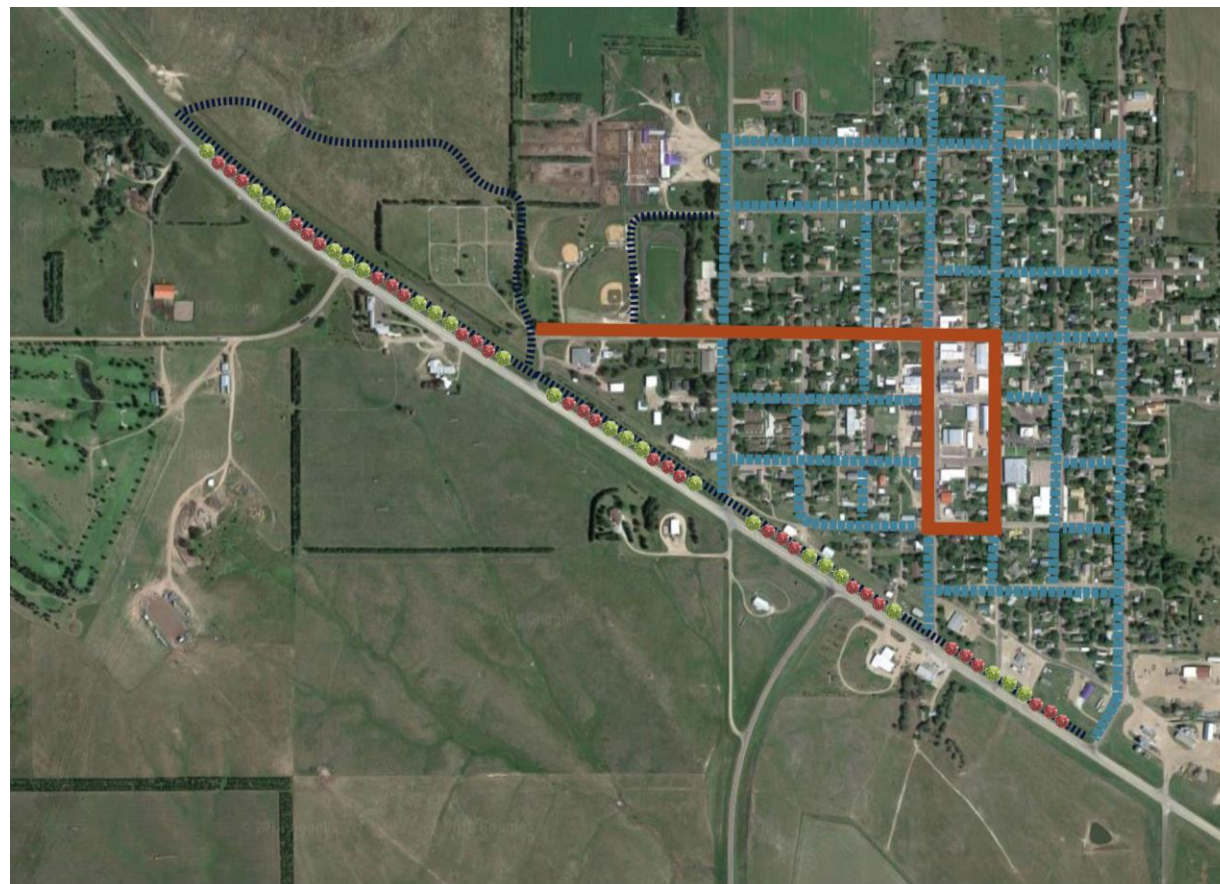


- PHASE 1 SIDEWALKS
- - - PHASE 2 SIDEWALKS
- · · PHASE 3 TRAIL

VEGETATION

In phase 3, vegetation is to be implemented on the trail along Highway 18

- Vegetation can be used to screen the buildings
- Can be used to add aesthetics along the trail



- PHASE 1 SIDEWALKS
- - - PHASE 2 SIDEWALKS
- PHASE 3 TRAIL

OUTDOOR SPACES

Farmer's Market

- Located across from the VFW

Memorial

- W 10th Street
- Respected Insurance Owner



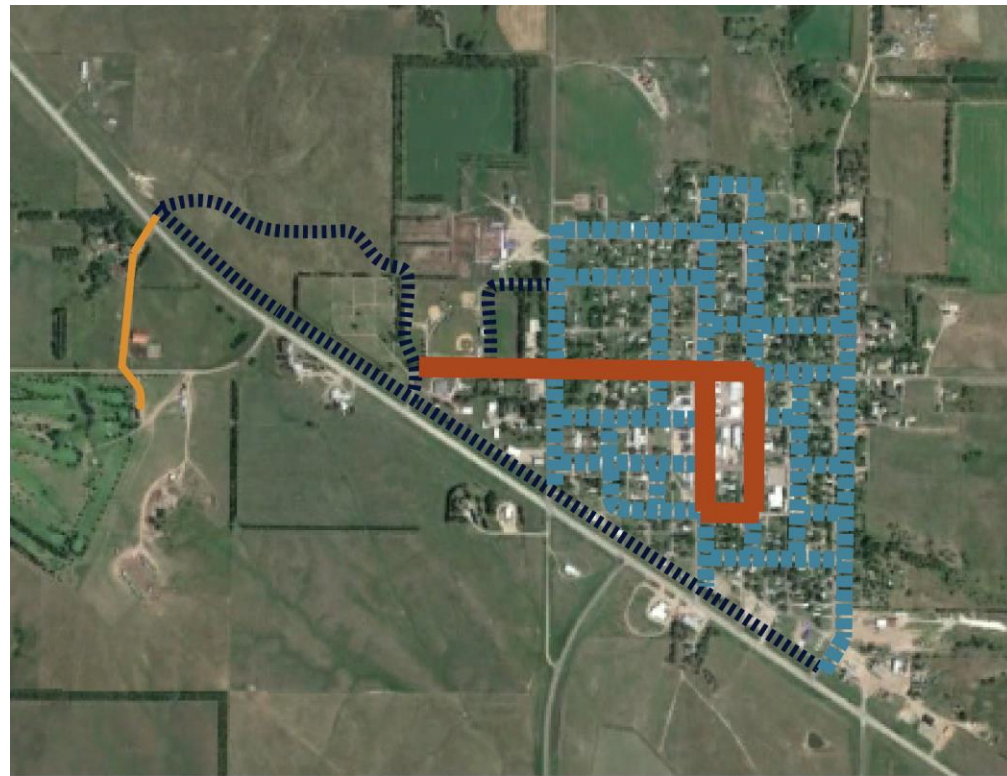
PHASE 4 (10-15 YEARS)

- Circulation
- Vegetation and Amenities
- Signage
- Outdoor Spaces
- Housing

Phase	Circulation	Vegetation & Amenities	Ordinances	Signage	Outdoor Spaces	Housing & Zoning
1	X	X	X			
2	X	X		X	X	X
3	X	X			X	
4	X	X		X	X	X
5	X					

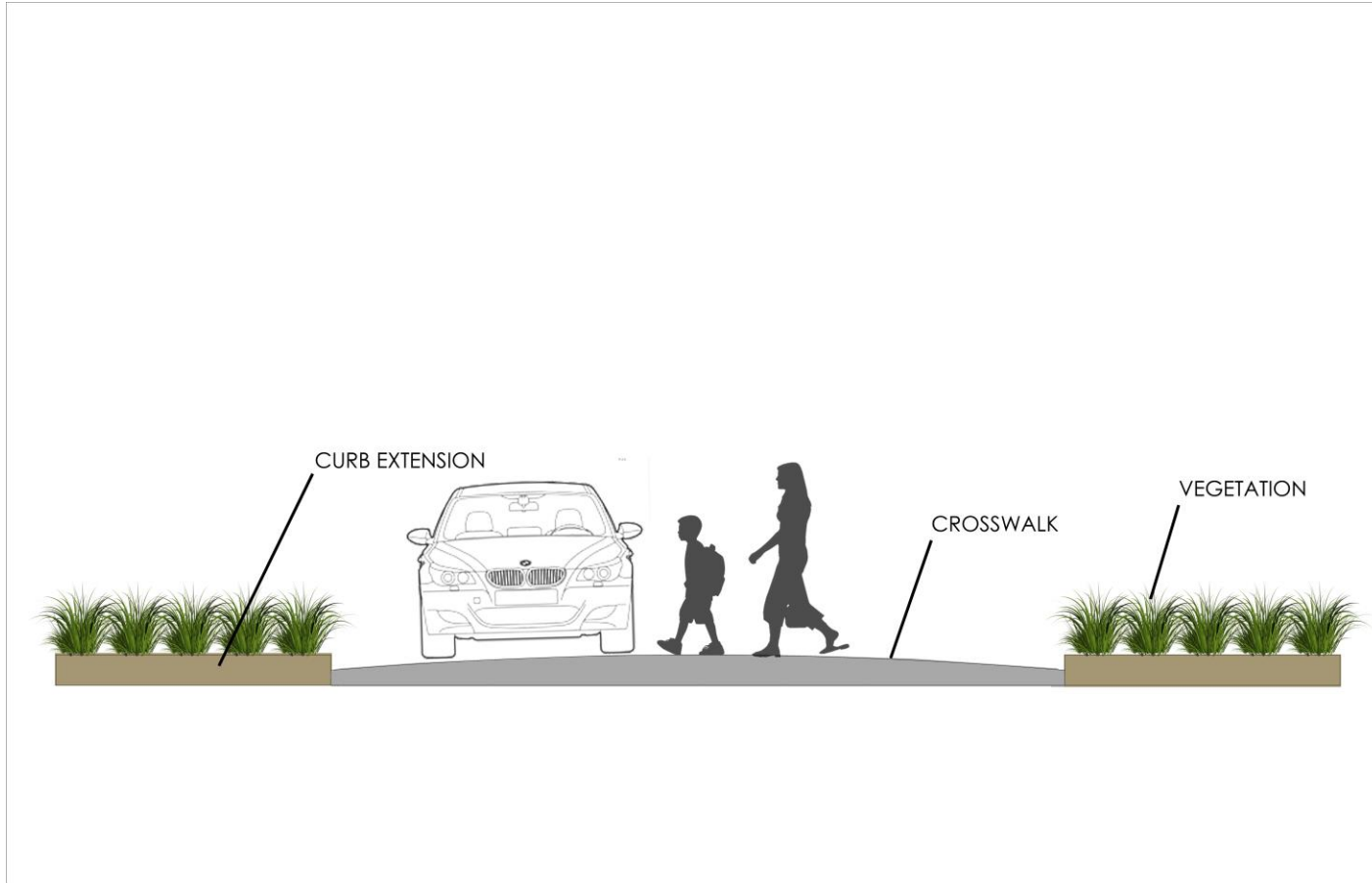
CIRCULATION

- Easier access to these areas
 - For cross country runners and active walkers
- Busy highway requires a curb extension and crosswalk
- Partnership with DOT

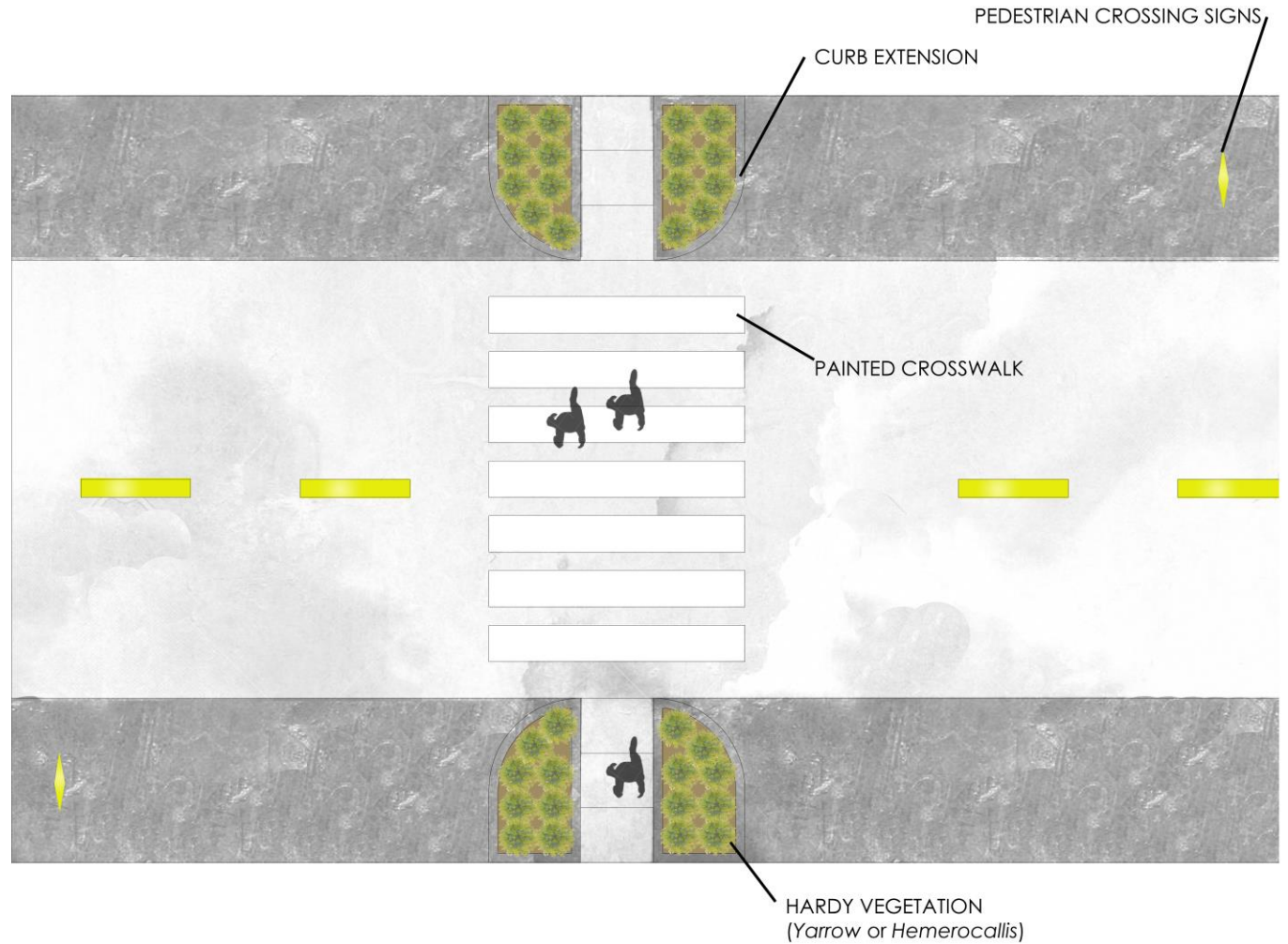


- PHASE 1 SIDEWALKS
- - - PHASE 2 SIDEWALKS
- - - PHASE 3 TRAIL
- PHASE 4 TRAIL

CURB EXTENSION SECTION



CURB EXTENSION PLAN VIEW



VEGETATION AND AMENITIES

Trail across Highway 18 promotes pedestrian traffic to rodeo grounds and golf course

Intersection of trail poses key node of circulation

- Benches create resting spots
- Trash cans reduce litter along trails
- Lighting promotes safety, highlights important nodes, and gives legibility on circulation routes
- Wayfindings to be placed at this main intersection of trail

SIGNAGE

- Pedestrian crossing signs need to be placed before cars reach the curb extension
- Change speed limit sign from 40 to 35 mph



OUTDOOR SPACES

E 10th Street

- Disconnected
- Unsafe



E 10TH STREET

- Demolish
- Regrade
- Redevelop



HOUSING

- Additional housing will provide opportunity for community growth
- Affordable housing and multiple family housing will attract more types of people to the area
- New housing development attracts new business



PHASE 5 (15-20 YEARS)

- Circulation

Phase	Circulation	Vegetation & Amenities	Ordinances	Signage	Outdoor Spaces	Housing & Zoning
1	X	X	X			
2	X	X		X	X	X
3	X	X			X	
4	X	X		X	X	X
5	X					

CIRCULATION

Connect Burke Lake to City of Burke by trails

- Outdoor opportunities
 - Picnicking
 - Camping
 - Fishing
- Assume management responsibilities for Burke Lake
 - Increase maintain and accessibility



- PHASE 1 SIDEWALKS
- PHASE 2 SIDEWALKS
- PHASE 3 TRAIL
- PHASE 4 TRAIL
- PHASE 5 TRAIL

COMPARISON CHART

- Long-range process with adjustable short-term tactics
- Encouraged by phases
 - Avoid tunnel vision
 - Take advantage of opportunities

Phase	Circulation	Vegetation & Amenities	Ordinances	Signage	Outdoor Spaces	Housing & Zoning
1	X	X	X			
2	X	X		X	X	X
3	X	X			X	
4	X	X		X	X	X
5	X					

CONCLUSION

- Circulation
- Safety
- Vegetation
- Amenities and Signage
- Outdoor spaces
- Housing
- Ordinances

